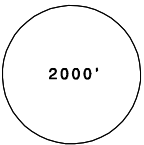
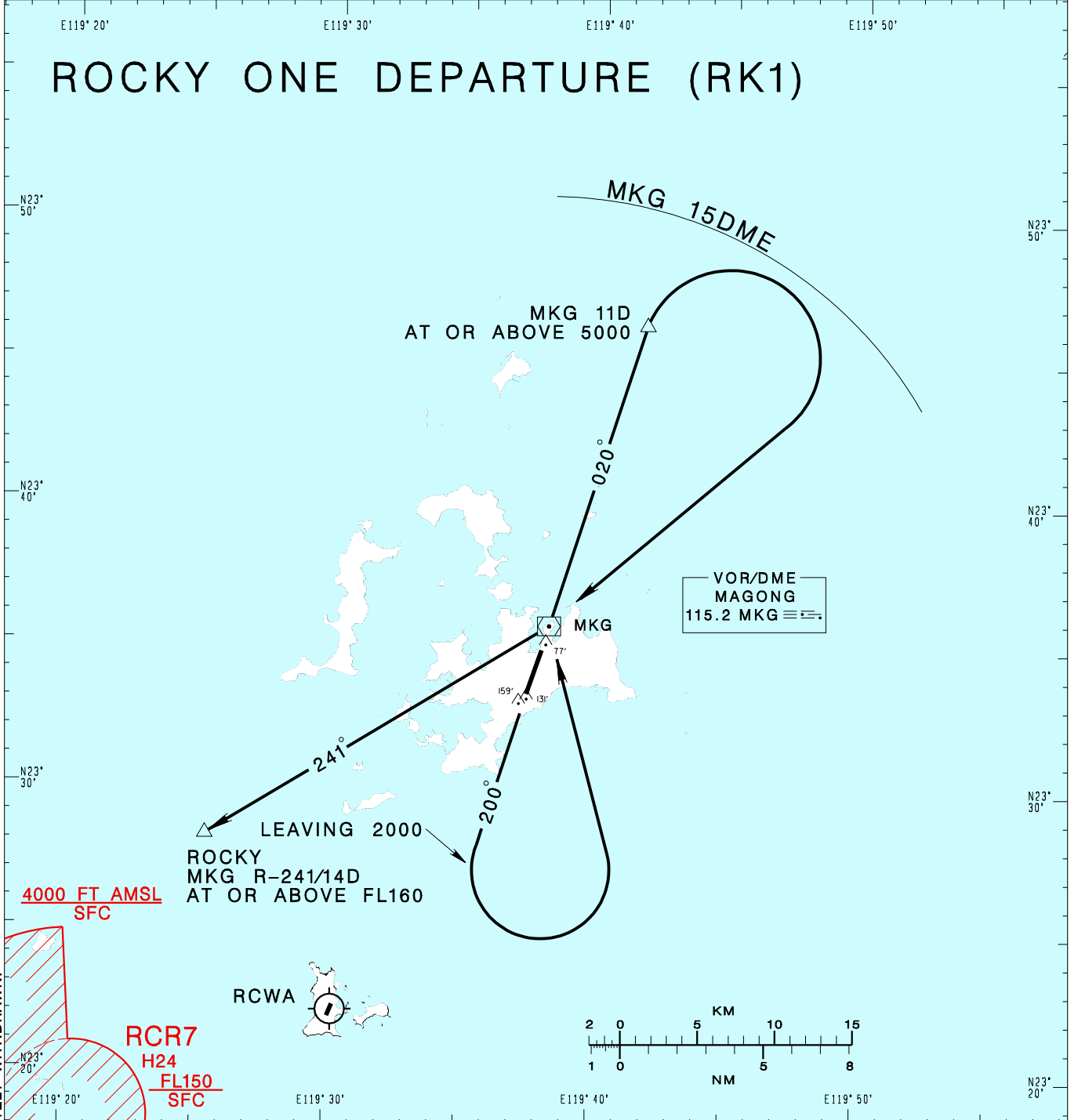


KAOHSIUNG APP 128.1 234.8	MAGONG TWR 118.3 236.6	ATIS 127.05	VAR 3° W ↑	 2000' MSA MKG VOR 25NM
Apt Elev: 103'		Trans Level: FL130		
BEARINGS ARE MAGNETIC; DISTANCES ARE NAUTICAL MILES; ELEVATIONS, HEIGHTS IN FEET				

# ROCKY ONE DEPARTURE (RK1)



CHANGES: BM NDB COMPLETELY WITHDRAWN.

**RWY02:** Depart via MKG R-020 to MKG 11D, cross MKG 11D at or above 5000ft, turn right direct MKG, complete turn within 15D from MKG, then track MKG R-241 to ROCKY to join A1, cross ROCKY at or above FL160.

**RWY20:** Depart via MKG R-200 until leaving 2000ft, turn left direct to MKG, track MKG R-020 to MKG 11D, cross MKG 11D at or above 5000ft, turn right direct to MKG, complete turn within 15 DME from MKG, then track MKG R-241 to ROCKY to join A1, cross ROCKY at or above FL160.

**Note:**

1. Caution close-in obstacles (trees, poles & water tower): 159ft MSL, 794m & 131ft MSL, 292m south of THR02; 77ft MSL, 436m north of THR20.
2. If unable to comply with altitude restriction, request ATC for RADAR vector in advance.